

ACCESSORIES



Stor-Locx
Modular Storage



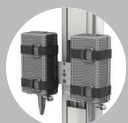
Utility Bin



Chart Bin



Utility Trays



Power Supply
Mounts



Medical Grade
Power Strips



Bar Code
Scanner Mounts



Utility Baskets



Channel
Covers



Utility Hooks



Cable Hooks



Handles



PolyQuip®
Post Mount



PolyQuip® I.V.
Bag Hanger



Gas Cylinder
Post Mount



Gas Cylinder
Channel Mount

GCX has more than 45 years' global experience creating fully configurable mounting solutions exclusively for the healthcare industry. GCX products are reliable, durable, cleanable, and safe, with a modular design for easy, cost-effective upgrades and adjustable positioning for enhanced workflow and user comfort.



Medical Devices

MOUNTING SOLUTIONS



GCX offers the range of solutions we need with the reliability and service we can count on.



ON-SITE
SERVICES

Ask us about our expert assembly and maintenance programs.

CHANNELS

GCX CHANNELS CAN BE ADAPTED TO A VARIETY OF MOUNTING SURFACES.



Surface Mount
Channel



Horizontal
Rail Channel



Vertical Rail
Channel



Wall Channel



Variable Height
Channel



Post Channel



Accessory
Track Channel



Headwall &
Pendant Channel

www.gcx.com

AMERICAS
+1 800 228 2555
+1 707 773 1100
Petaluma, California
United States

EMEA
+31 (0) 88 627 26 00
Tilburg
The Netherlands

APAC
+886 2 2298 2842
New Taipei City
Taiwan



GCX quality management processes are ISO 13485:2003 certified. GCX, PolyMount, and PolyQuip are registered trademarks, and VHRC, VHC, VHM, VHRS, PRC, M Series, and Stor-Locx are trademarks, of GCX Corporation. All other brand names, product names, or trademarks belong to their respective holders. © Copyright 2016

ARMS

FIXED AND VARIABLE HEIGHT SUPPORT ARMS FOR A WIDE RANGE AND COMBINATION OF DEVICES.



Patient Monitors



Anesthesia



Monitoring/IT Workstations

CARTS & ROLL STANDS

FIXED AND VARIABLE HEIGHT MOBILE SOLUTIONS FOR A VARIETY OF MEDICAL DEVICES AND IT HARDWARE FOR EMR.



Patient Monitors



Monitoring / IT Workstations



ANESTHESIA

SOLUTIONS FOR SAFE AND ERGONOMIC INTEGRATION OF MEDICAL DEVICES AND COMPUTER HARDWARE ONTO ANESTHESIA MACHINES.



GCX WILL CHECK COMPLIANCE OF THE DESIRED MOUNTING CONFIGURATION ACCORDING TO IEC 60601-1 TECHNICAL STANDARDS.

MOUNTING INTERFACES



Channel



Horizontal Rail



Horizontal Rail with Foot



Vertical Rail



Vertical Post Fixed Diameter



Vertical Post Variable Diameter



Vertical Post Transport Clamp



Accessory Track

WE WORK WITH MEDICAL DEVICE MANUFACTURERS WORLDWIDE

Capsule • CASMED • Colin • Covidien • Datex Ohmeda • Deltex Medical • Dixtal Medical • Dräger • Edan • Edwards Lifesciences • Fukuda Denshi • GE Healthcare • Hill-Rom • Invivo • Maquet • Masimo • Mindray • Mortara • Nellcor • Nihon Kohden • Philips • Physio Control • Schiller • Sonosite • Spacelabs • Stryker • Welch Allyn • Zoe Medical • Zoll and more

CEILING & COUNTER TOP

GCX OFFERS SOLUTIONS FOR MANY APPLICATIONS AND DEVICES.



VHM Series

VARIABLE HEIGHT ARMS

VHM-P AND VHM-PL



OPTIONAL EXTENSIONS
8"/20.3 CM
14"/35.6 CM

VHM-25



OPTIONAL EXTENSIONS
7"/17.8 CM
ANGLED OR HORIZONTAL

E and M Series

FIXED HEIGHT ARMS

TILT/SWIVEL ARM



ARM LENGTH
6"/15.2 CM

PIVOT ARM



ARM LENGTHS
FLUSH
8"/20.3 CM
12"/30.5 CM
16"/40.6 CM

ARTICULATING ARM



ARM LENGTHS
8 X 8"/20.3 X 20.3 CM
8 X 12"/20.3 X 30.5 CM
12 X 12"/30.5 X 30.5 CM

RS and VHRS Series

FIXED AND VARIABLE HEIGHT ROLL STANDS



LIGHT DUTY

FIXED HEIGHT

KNOB HEIGHT CONTROL

VHRC and RC Series

FIXED AND VARIABLE HEIGHT CONFIGURABLE CARTS



FIXED HEIGHT

VARIABLE HEIGHT

Dual Channel Columns

ACCOMMODATES GCX CHANNEL MOUNTS



COLUMN HEIGHTS
12"/30.5 CM
18"/45.7 CM
24"/61 CM



COLUMN HEIGHTS
8"/20.3 CM
18"/45.7 CM
12"/30.5 CM
24"/61 CM
36"/91.4 CM

Bolt-Down, Desk Clamp & Pedestal Mounts

